

RDT Merchandise Sizing Charts

Most items offered in Small – X-Large regardless of sizes shown below.

SPORT-TEK ZIP UP



Adult sizes only

PRODUCT MEASUREMENTS

	XS	S	M	L	XL	XXL	3XL	4XL
Sleeve Length	32	32 1/2	33	33 3/8	33 3/4	34 1/8	34 1/2	34 7/8
Bust	17 1/2	18 1/2	19 1/2	21	22 1/2	24	26	28
Body Length at Back	25	25 1/2	26	27	28	29	29 1/2	30

SLEEVE LENGTH

Start at center of neck and measure down n shoulder, down sleeve to hem.

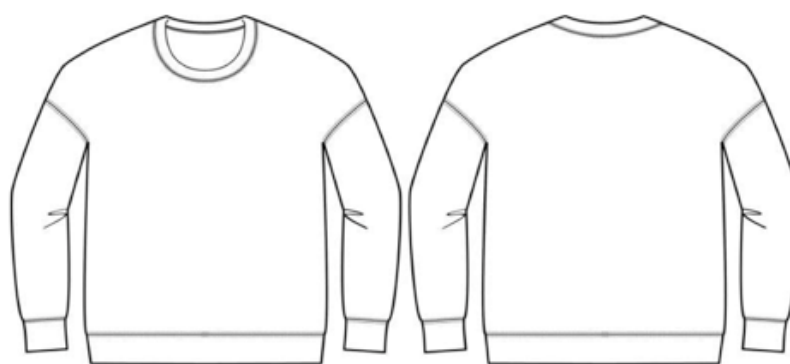
BUST

Measured across the chest one inch below armhole when laid flat.

BODY LENGTH AT BACK

Measured from high point shoulder to finished hem at back.

ADULT PULLOVER



Points of Measurement (inches)	XS	S	M	L	XL	2XL
Body Width - 1" Below A.H.	19 3/8	21 3/8	22 3/4	25 1/8	27 1/8	29 1/8
Body Length From HPS	27 1/8	27 5/8	28 1/4	29 5/8	30 5/8	31 5/8

FABRICATION

52% COMBED AND RING-SPUN COTTON, 48% POLYESTER
 90% COMBED AND RING-SPUN COTTON, 10% POLYESTER
 70% COMBED AND RING-SPUN COTTON, 30% POLYESTER

YOUTH PULLOVER



YS	Youth Small	6-8
YM	Youth Medium	10-12
YL	Youth Large	14-16
YXL	Youth Extra Large	18-20

SWEAT PANTS



ADULT

PRODUCT MEASUREMENTS

	XS	S	M	L	XL	2XL	3XL	4XL
Waist	11	12	13 1/2	15	17	19	20	23
Inseam	30	31	32	32	33	33 1/2	34	34 1/2

WAIST

Measured point to point across the waistband when laid flat.

INSEAM

Measured from crotch seam to hem.

YOUTH

PRODUCT MEASUREMENTS

	XS	S	M	L	XL
Waist	9 1/2	10	11	12	13
Inseam	14 3/4	16 3/8	20 7/8	24 3/4	27

WAIST

Measured point to point across the waistband when laid flat.

INSEAM

Measured from crotch seam to hem.

SHORTS



Adult sizes only

S	Small	2-6	4.375"
M	Medium	6-8	5"
L	Large	10-12	5.625"
XL	Extra Large	14-16	6.25"
2XL	Double Extra Large	18-20	6.25"